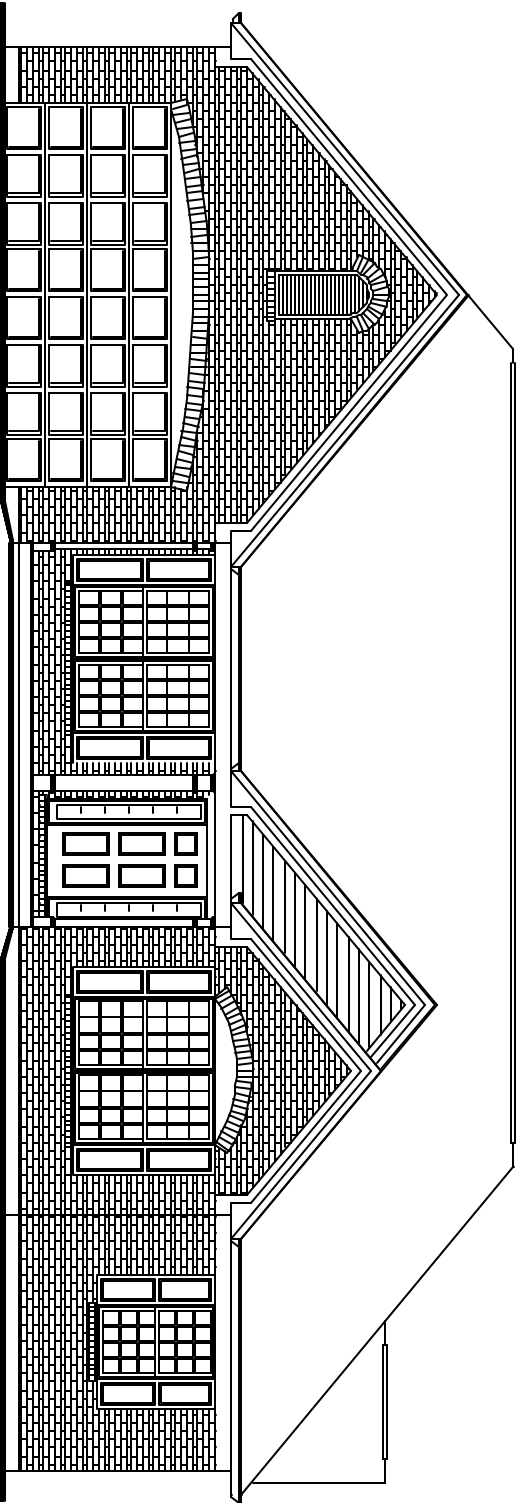




FIRST FLOOR PLAN



FRONT ELEVATION

ROOMS
PLAN INFO

3	BDRMS
2	BATHS
1	GARAGE
1	UTILITY RM
1	DECK
TOTAL SQUARE FOOTAGE	
1003	MAIN
N/A	UPPER FINISH
17'x	LOWER FINISH
23'	CEILING (EX. AREA)

KEY PLAN

